



NATOMAS NAMED PUMPING PLANTS

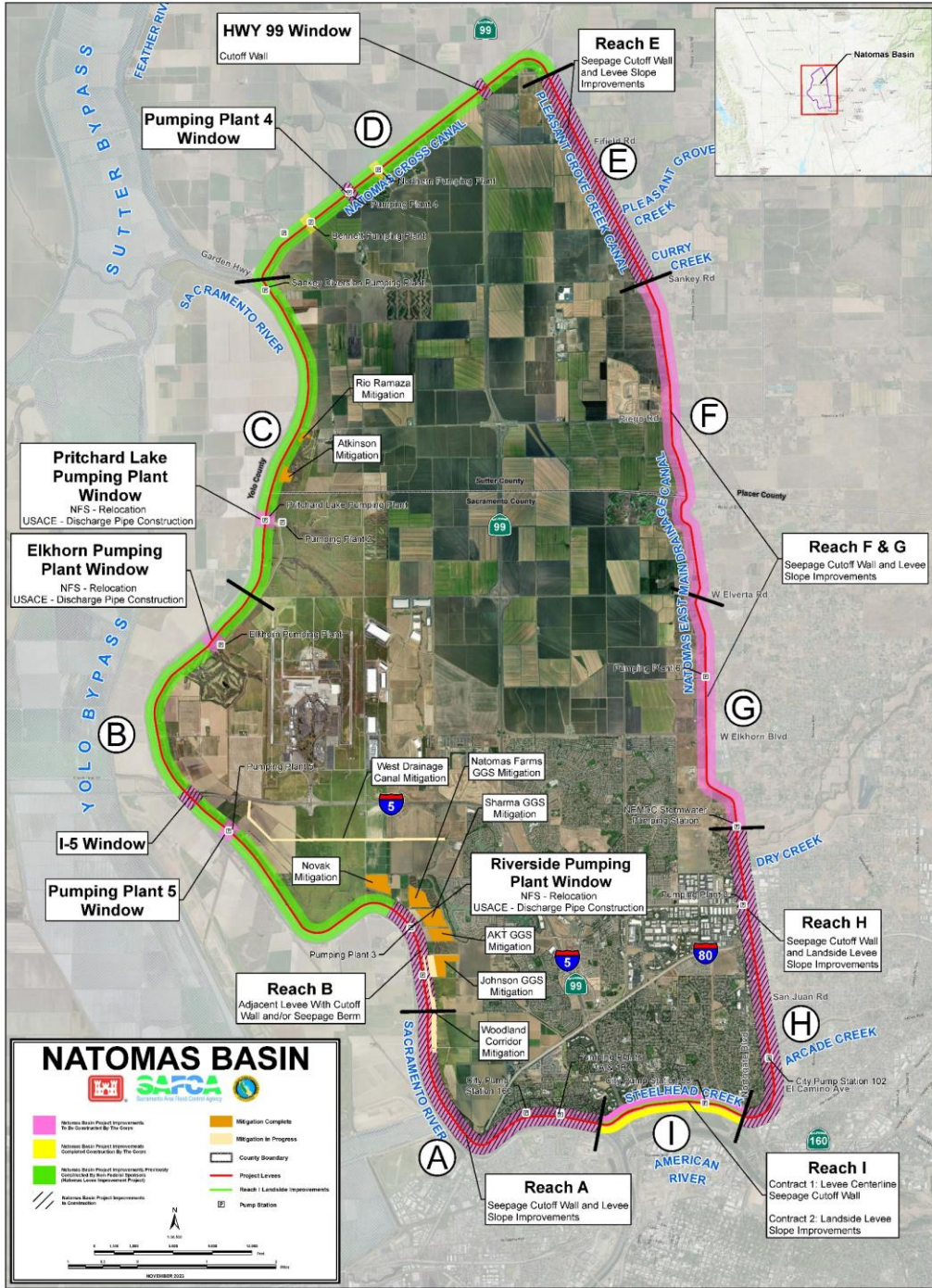
NAME: Alexander Watkins
TITLE: Environmental Manager
DATE: May 7, 2026

“Delivering Bold Solutions to Serve and Strengthen All Communities”



US Army Corps
of Engineers®

NATOMAS BASIN MAP



- AGENDA:**
- Project Overview
 - What is an SEA
 - Key Issues
 - Questions



WHAT IS THE NAMED PUMPING PLANTS PROJECT

- Part of the Natomas Levee Improvement Project
- Consists of three pumping plants in Natomas:
 - Elkhorn
 - Pritchard
 - Riverside
- A pipe replacement project
- Will require detours around Garden Highway
- Taking place over 3 years



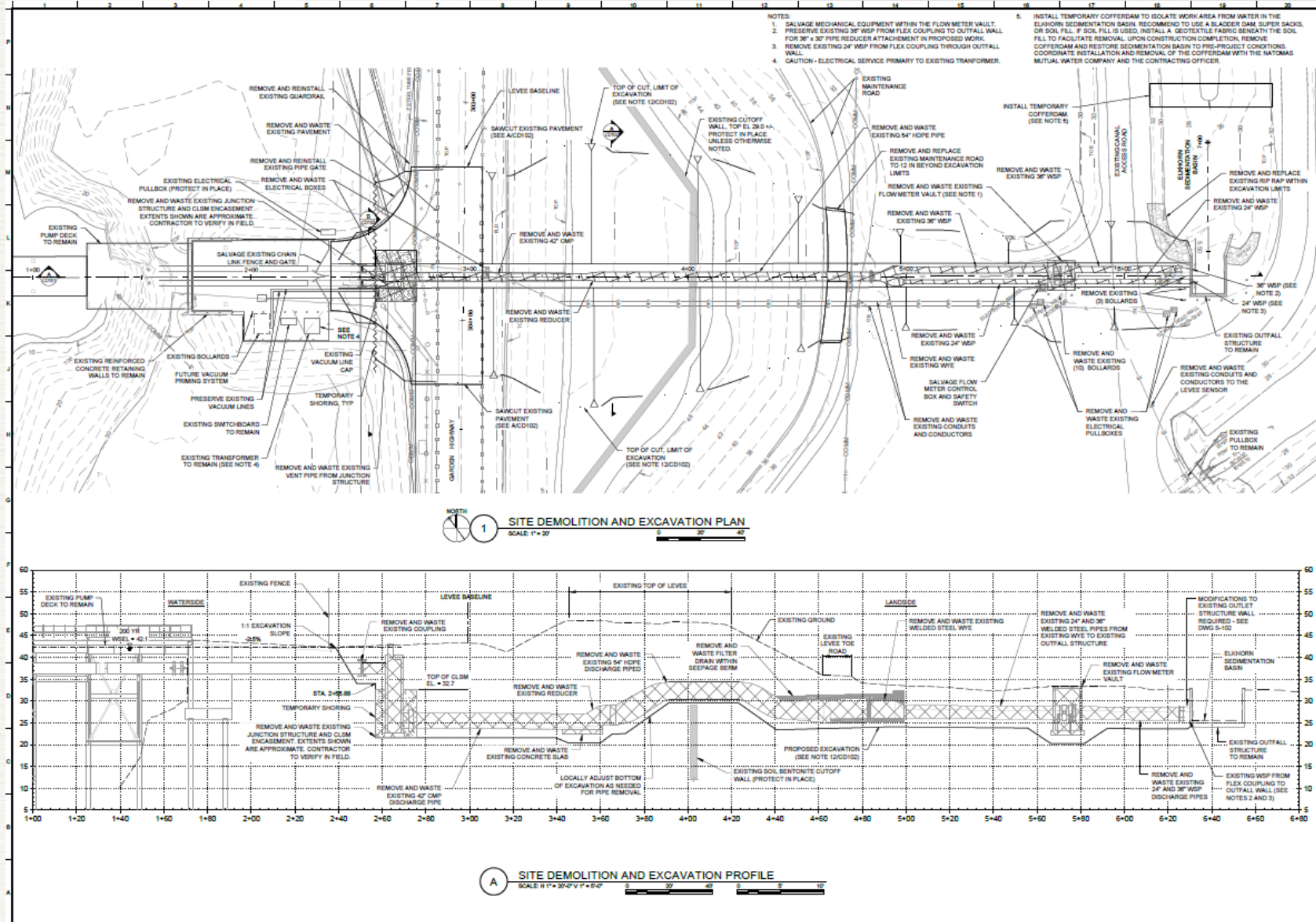
U.S. ARMY



US Army Corps
of Engineers®



DISCHARGE PIPE DIAGRAM





WHAT IS AN SEA?

- **Environmental Assessment**
 - Required by NEPA before any federal action to analyze the environmental impacts of that action and any reasonable alternatives and to disclose the decision-making process.

- **A Supplemental Environmental Assessment**
 - Required by NEPA to analyze projects that had previous environmental documentation, but new information about that project or new project components require further analysis.



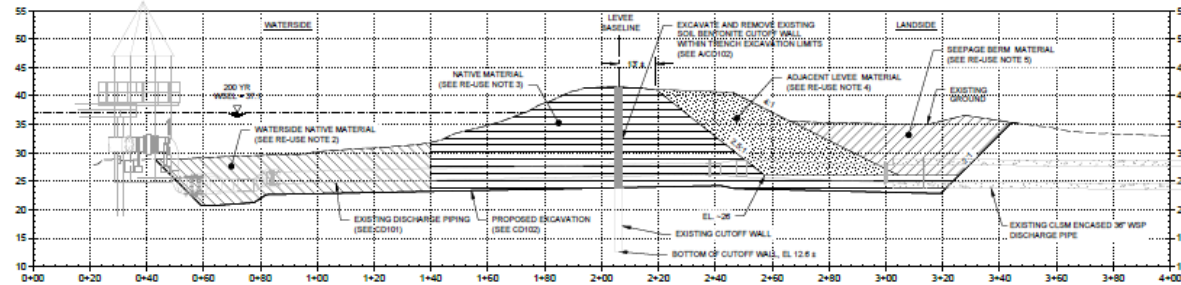
U.S. ARMY



US Army Corps
of Engineers®



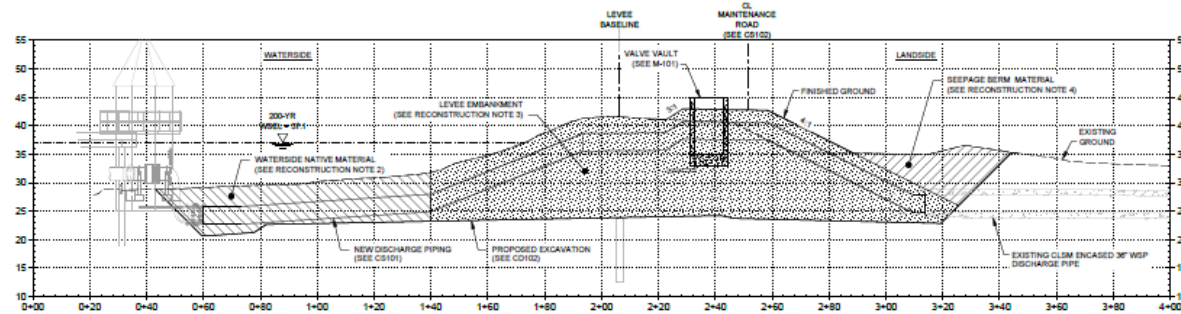
EXAMPLE PIPE REPLACEMENT



A EXCAVATION - ESTIMATED SOIL FOR RE-USE
 SCALE: H² = 20' HORIZ. V² = 10' VERT.

SOIL MATERIAL RE-USE NOTES:

1. THE EXTENTS OF THE ESTIMATED SOIL MATERIAL TO BE RE-USED IS APPROXIMATE. CONTRACTOR MUST CONFIRM EXCAVATED MATERIAL FOR RE-USE IN ACCORDANCE WITH THE SPECIFICATIONS.
2. EXCAVATED WATERSIDE NATIVE MATERIAL IS UNKNOWN. NATIVE MATERIAL WATERSIDE OF THE GARDEN HIGHWAY MAY BE RE-USED FOR EMBANKMENT CONSTRUCTION BETWEEN THE PUMP HOUSE AND STA 1+30 IF IT MEETS SOIL REQUIREMENTS IN THE SPECIFICATIONS.
3. NATIVE MATERIAL SOIL TYPE IS UNKNOWN. CONTRACTOR MAY RE-USE THE NATIVE MATERIAL IF IT MEETS THE SOIL REQUIREMENTS IN THE SPECIFICATIONS.
4. ADJACENT LEVEE MATERIAL IS EXPECTED TO MEET THE SOIL REQUIREMENTS FOR RECONSTRUCTION OF THE LEVEE EMBANKMENT. CONTRACTOR MUST CONFIRM EXCAVATED MATERIAL FOR RE-USE IN ACCORDANCE WITH THE SPECIFICATIONS.
5. SEEPAGE BERM MATERIAL IS EXPECTED TO MEET THE SOIL REQUIREMENTS FOR RECONSTRUCTION OF THE SEEPAGE BERM. CONTRACTOR MUST CONFIRM EXCAVATED MATERIAL FOR RE-USE IN ACCORDANCE WITH THE SPECIFICATIONS.



B COMPACTED EMBANKMENT - RECONSTRUCTION SOIL MATERIAL
 SCALE: H² = 20' HORIZ. V² = 10' VERT.

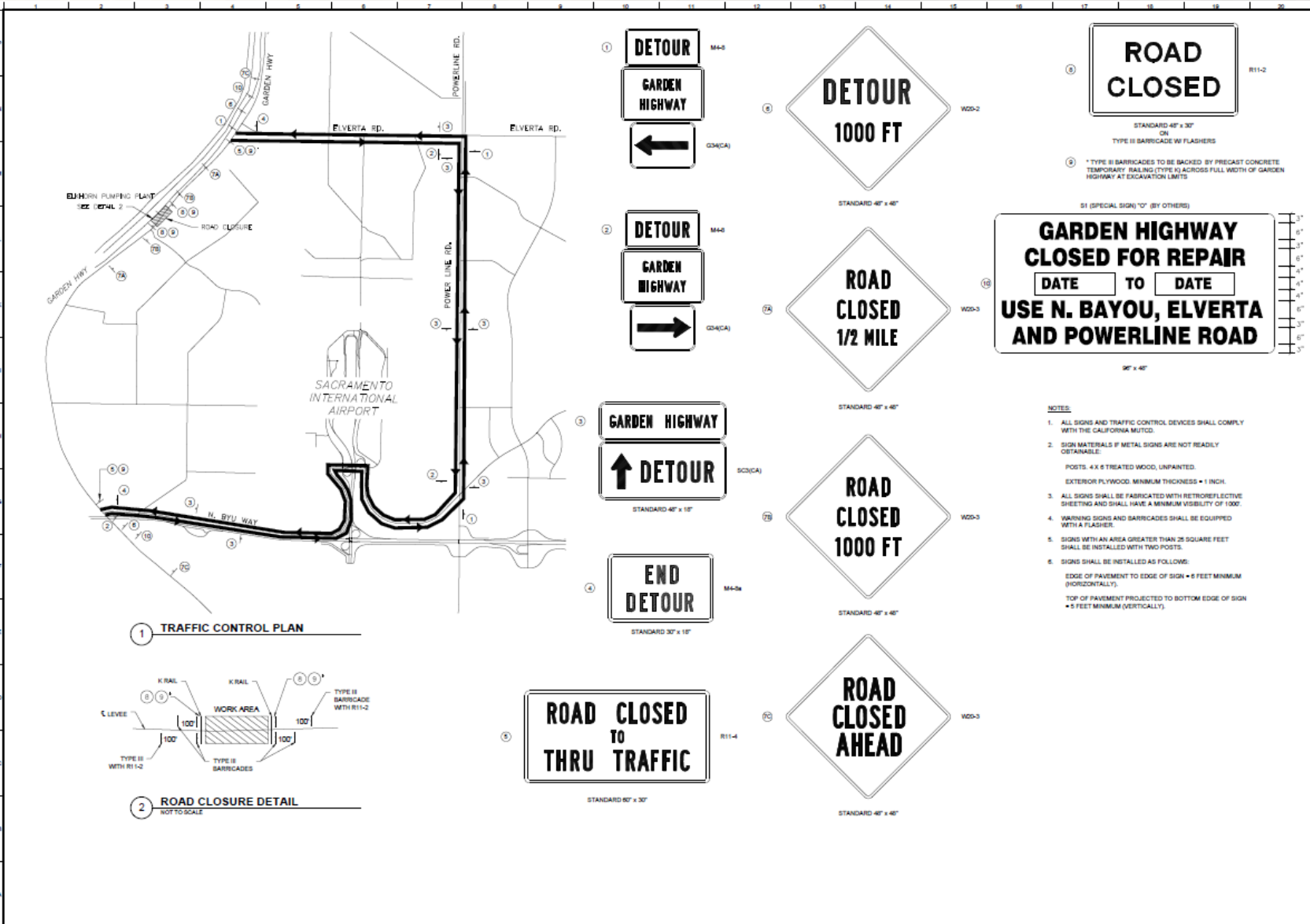
SOIL MATERIAL RECONSTRUCTION NOTES:

1. CONTRACTOR MUST CONFIRM MATERIAL GENERATED FROM PROJECT EXCAVATIONS TO BE USED FOR EMBANKMENT RECONSTRUCTION IN ACCORDANCE WITH THE SPECIFICATIONS.
2. NATIVE MATERIAL (RANDOM FILL) WATERSIDE OF THE GARDEN HIGHWAY MAY BE RE-USED FOR EMBANKMENT CONSTRUCTION BETWEEN THE PUMP HOUSE AND STA 1+30 IF IT MEETS SOIL REQUIREMENTS IN THE SPECIFICATIONS.
3. MATERIAL TO RECONSTRUCT THE LEVEE EMBANKMENT (SOIL TYPE 3) MUST BE IN ACCORDANCE WITH THE SPECIFICATIONS.
4. MATERIAL TO RECONSTRUCT THE SEEPAGE BERM (RANDOM FILL) MUST BE IN ACCORDANCE WITH THE SPECIFICATIONS.



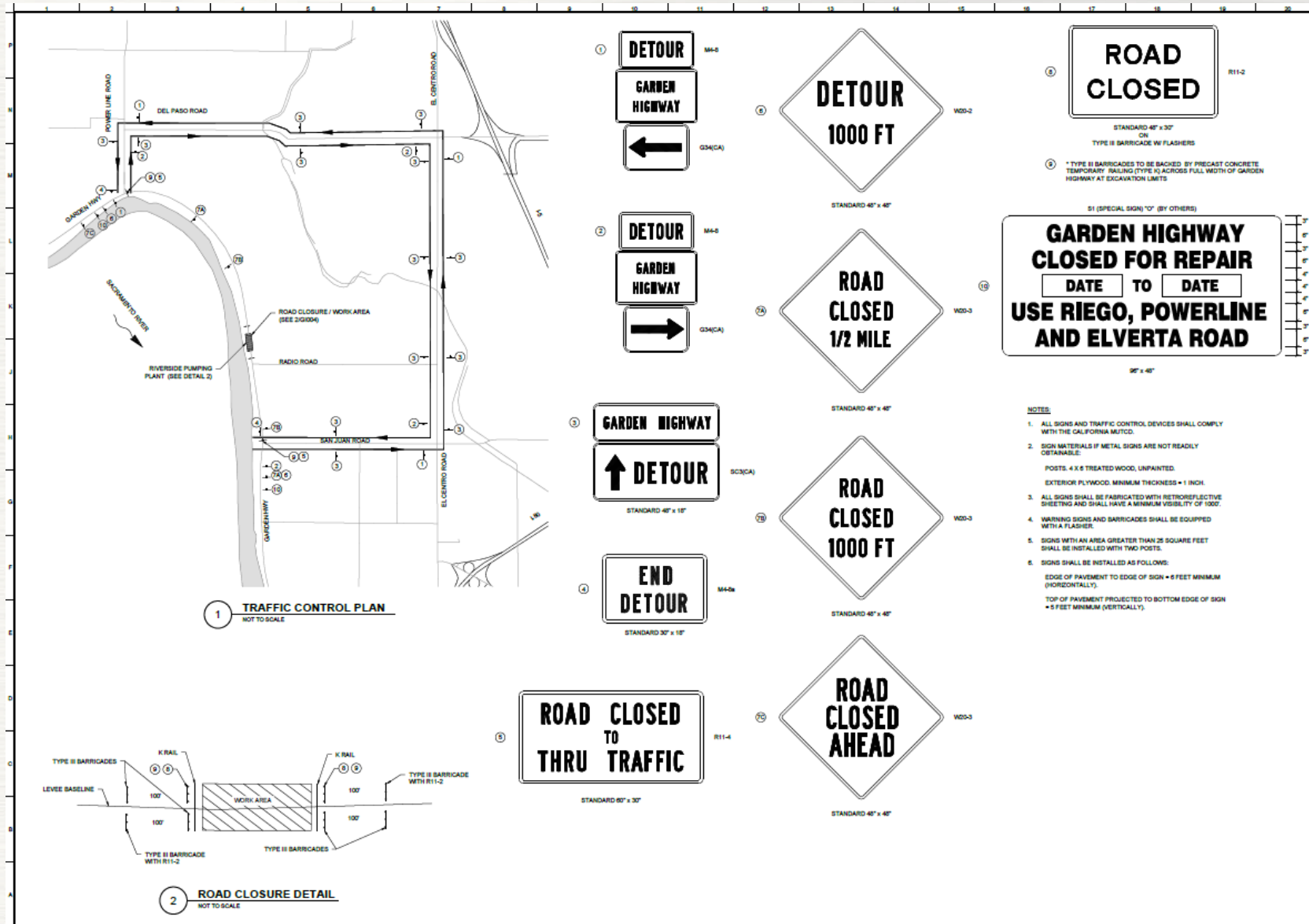


PROPOSED ELKHORN DETOUR



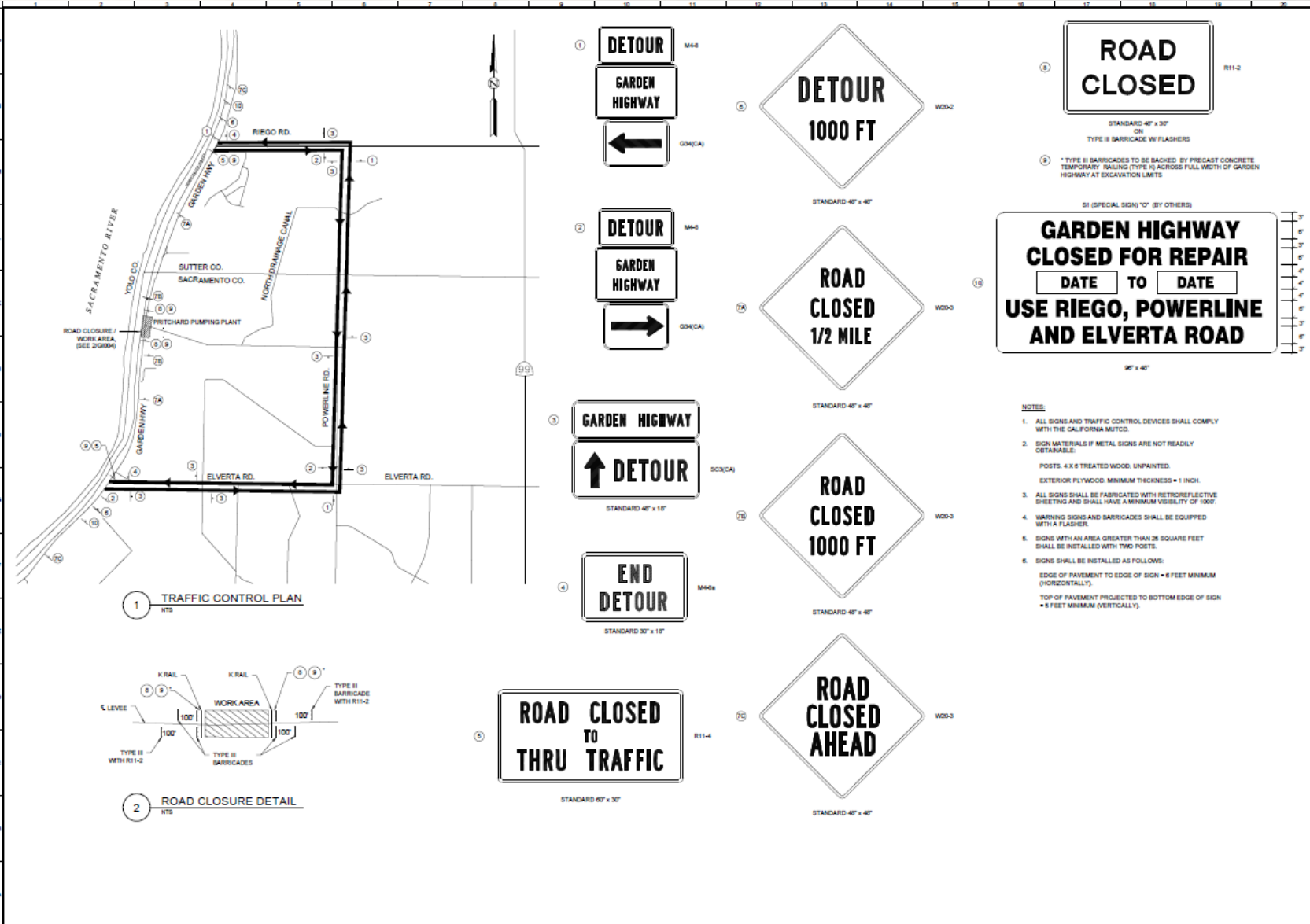


PROPOSED RIVERSIDE DETOUR





PROPOSED PRITCHARD DETOUR





QUESTIONS?



U.S. ARMY



US Army Corps
of Engineers®



NAMED PUMPING PLANTS PROJECT

- For more information on Natomas Basin work or to send comments on the Named Pumping Plants Project:
- Email: DLL-cespk-nnpp@usace.army.mil
- Write to:
USACE1325 J St. 95815
Attn PAO / NNPP
- Natomas Basin: <https://www.spk.usace.army.mil/natomas/>



U.S. ARMY



US Army Corps
of Engineers®